



Myanmar Pyi San Htar

MYANMAR PYI SAN HTAR GROUP COMPANY PROFILE

CONNECTIVITY, INFRASTRUCTURE AND ENERGY OF MYANMAR'S FUTURE

Content

- Introduction
 - Vision & Core-values
 - General Information
- Reference Projects
- Portfolio Clients
- Awards and Achievement
- Country Presence
- Standards & Competative Advantage
- Delivered Project Highlights

Introduction

Myanmar Pyi San Htar Group of Companies (MPC Group) is a growing local company with vast experience in telecommunication, construction, engineering services, logistic and trading, power and infrastructure projects. With our strong regional presence across the country, years of project management experience, combined with the latest technology and equipment and highly skilled and trained personnel, MPC has been a successful projects with strict requirements by both local and international customers.

Hein Htet Bo

Myanmar Pyi San Htar Group



Vision & Core Values

Vision

Connectivity, Infrastructure and Energy of Myanmar's future



People

Employees are at the heart of everything we do



Customer Satisfaction

Meet and exceed our customer requirements



Efficiency

Everyone works hard to deliver at all times



Community support

Supporting our community through CSR



Cost Aware

Considered spending for efficient delivery with no waste



Partnerships

Building Partnerships which are straight forward and honest



Professional

We take pride in delivering a quality product or service

General Information of MPC

Company

- MPC group is 100% locally-owned independent service company which has achieved the award from the international companies
- Incorporated in 2010 as a construction company under the name of Modern Pyi San Htar Construction, specializing in infrastructure, concrete and earthworks for the projects such as Saging University main building, Government Housing in Nay Pyi Daw, Roads, Expressway, Bridges, Concrete/Earth Dams.
- MPC was awarded to build a section of Naypyitaw-Mandalay Expressway, a renowned project by Ministry of Construction.
- In 2012, MPC began entry to telecom infrastructure service business by securing a contract from telecom operator Yadanarbon Teleport to build telecommunication towers, logistic and tower material importing (trading) in upper region of Myanmar.
- MPC collaborates with National Tower Development Company and Cube Digital in the area of telecommunication, construction, logistic and trading, value-added services, engineering services and infrastructure projects

Our Reference Projects

Project Name	Customer	Year
Express Way (Ygn-Mdy)	Ministry of Construction	2010
Government Police Housing (Nay Pyi Taw)	Ministry of Construction	2010
Highway Road (Tatkone-Pinlaung)	Ministry of Construction	2012
Yadanarpon Teleport (GSM Towers)	Yadarnarpon Teleport	2013
Sagaing University (Sagaing Division)	Ministry of Education	2014
MTC Tower Project	Digicel (Myanmar Tower Company)	2015
MPT-KSGM Network Expansion and FTK Project	Huawei	2015

Project Name	Customer	Year
Ooredoo Tower Project	OCK	2016
Nesic (MPT / KSGM)	Nesic / TWC	2016
KSGM	Edotco	2017
Mytel Tower Project	CMC	2018-2020
YOMA Solar project	YOMA micropower	2018-2020
Tower Retrofit Project	Edotco / Apollo / Panasia	2019-2020
Tower Preventive Maintenance Project	Edotco / Apollo / Pan-Asia	2019-2020
O&M	Pinnacle Asia	2020
DG Maintenance Service	Apollo / Pan-Asia	2020
O&M services	Over 300 sites	present

Portfolio Clients

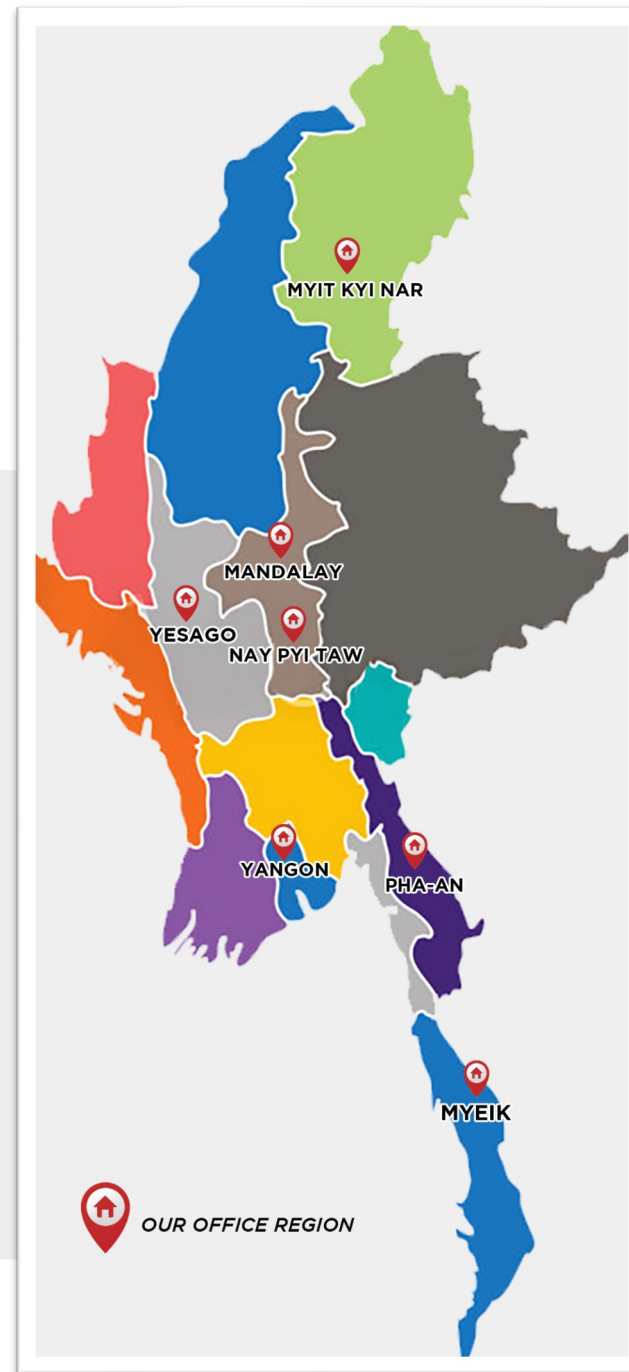


Awards and Achievement



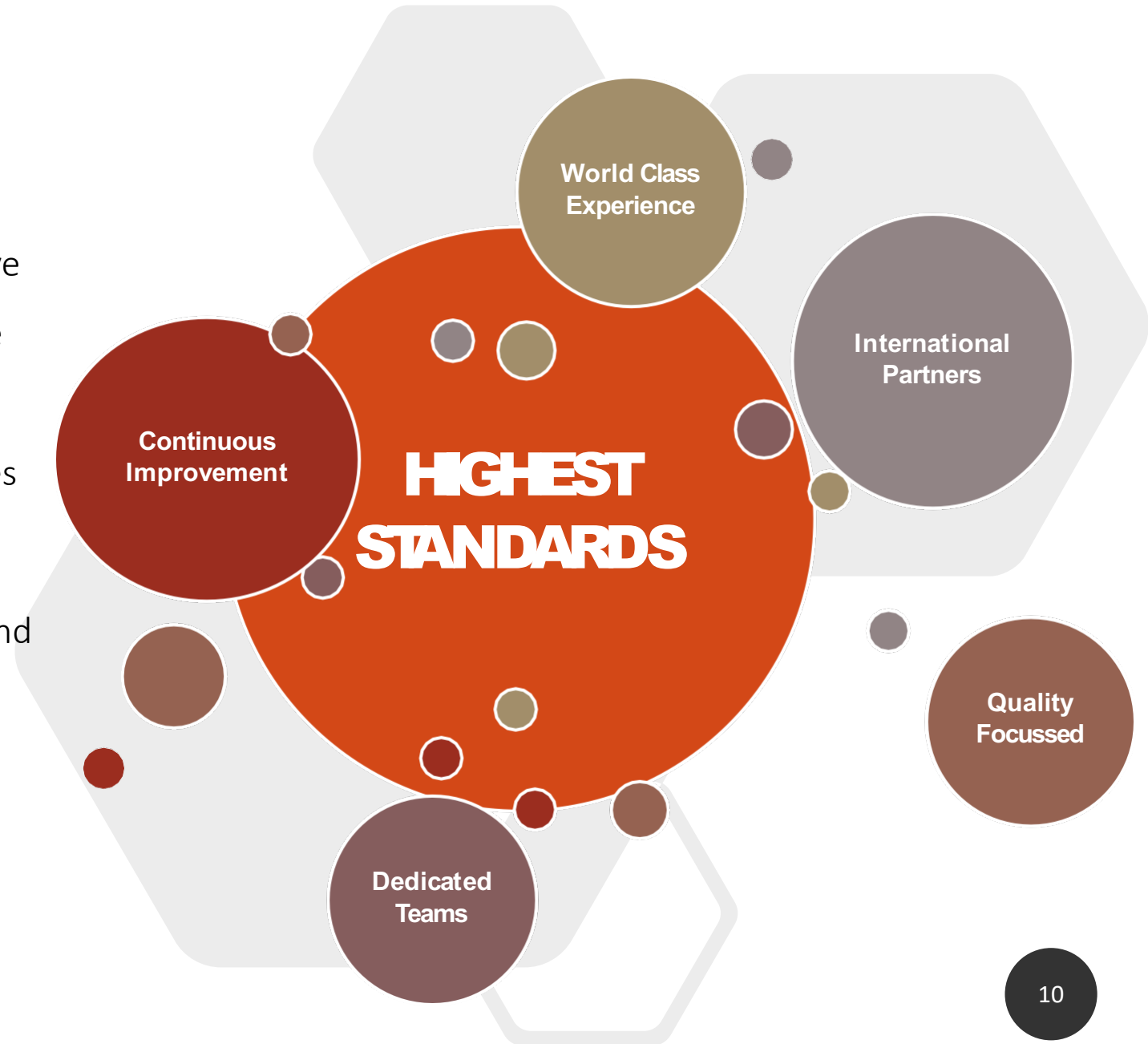
Country Presence

With our headquarters in Yangon and Branch offices in Mandalay, Magway, NayPyiTaw, Thanitharyi and Kayin State, MPC provides outstanding services with focus on safety, quality and efficiency to exceed customers' satisfaction.



Standards

- MPC has a strong and experienced executive team, which is the driving force behind the company. Introducing international standards, highest quality and best practices to ensure the best for our clients.
- With our continuous improvement vision and international partnerships, we ensure our teams are always on the top of their game and ready to deliver.



Competative Advantege



In depth understanding of the industry and access to market intelligence



Established shareholders business and partner networks



Strong knowledge of local regulatory and legal framework



A key understanding of Myanmar cultural practice and protocols



Efficient subcontractor network for rollout and operational services



Clear and transparent corporate governance framework



Strong business plan with clear inorganic growth aspirations

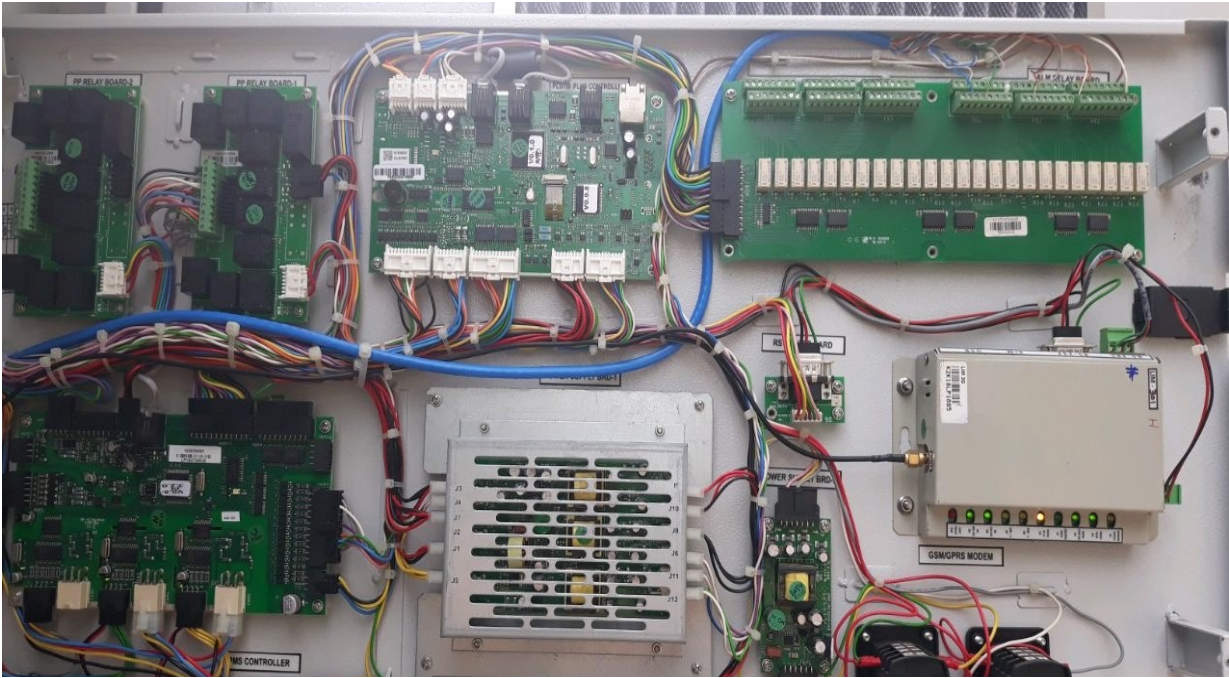


Delivered Project Highlights

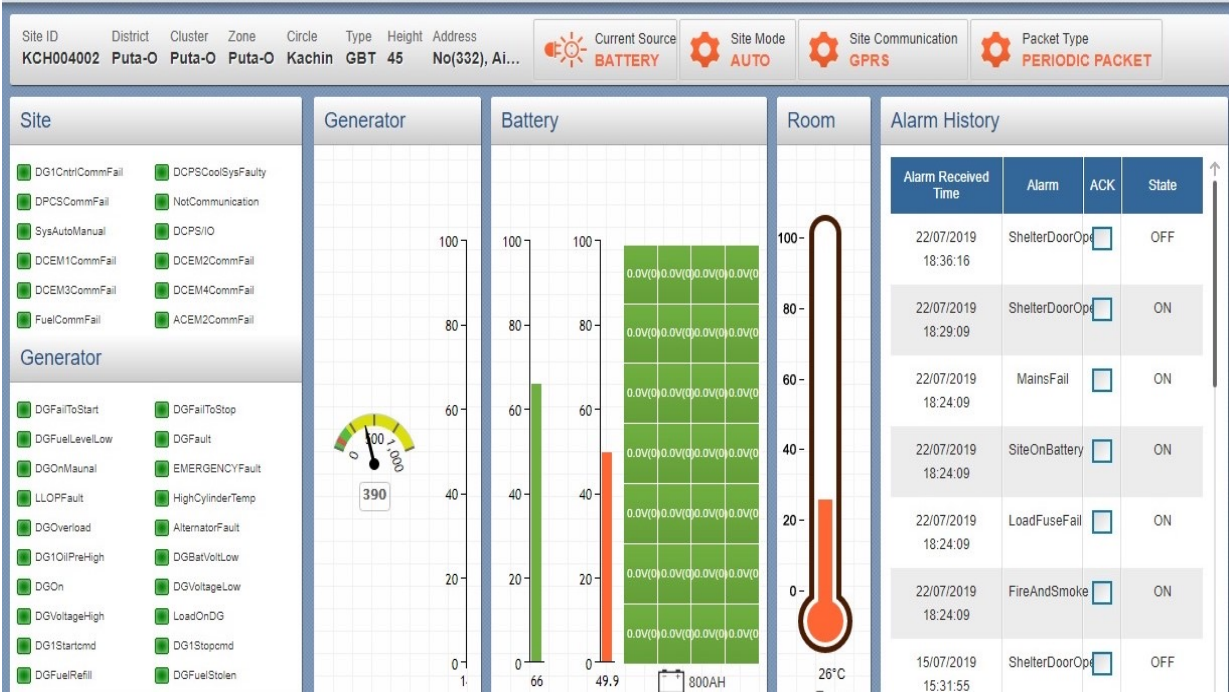








22.03950388N 96.42792068E
Maymyo



21°11'7.979"N 95°7'23.86"E
Nyaung-U Township
Nyaung-U
Mandalay Region
Remark: MDY0797, Before Fuel Filling





Thank you

Contact Us



Myanmar Pyi San Htar

Office 1: No.195-203, Room No.204-206, Sakura Hotel & Service Apartment, Kyee

Myin Dines Strand Road, Thit Taw Ward, Ahlone Township, Yangon, Myanmar

Office 2 : No.641, Innwa19 (A) Street, South Okkalapa

Township, Yangon, Myanmar

Email: info@mpcmyanmar.com

www.mpcmyanmar.com